

*Five summers on board the M.V. Salvelinus
in the Western Arctic, 1964-68,*

A few slides

Jean Boulva

June 2021

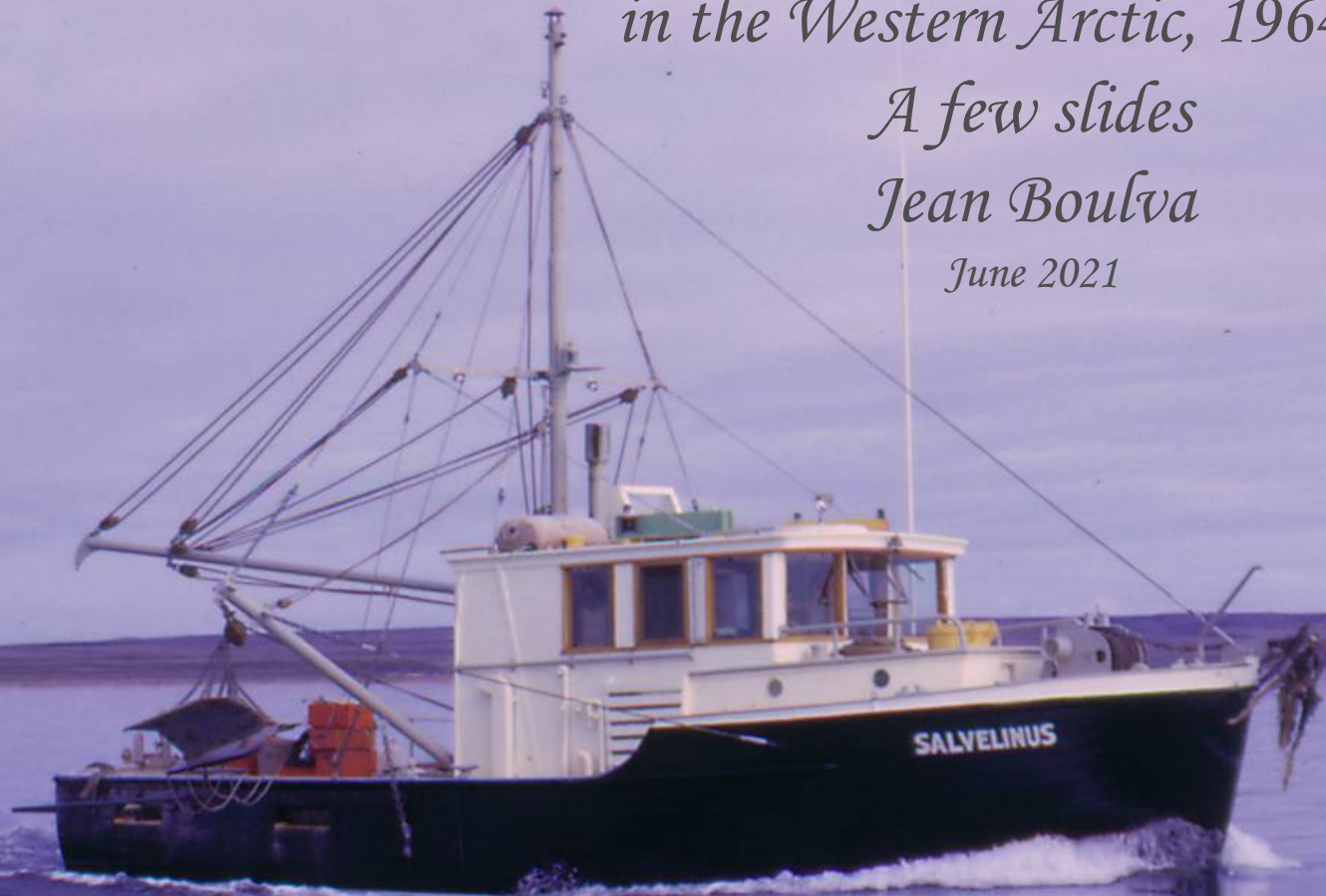


PHOTO CREDIT: NWT Archives/Jean Boulva Photograph Collection, © NWT Archives
<https://gnwt.accesstomemory.org/428>



The M.V. Salvelinus, a 12 m rear/side trawler, was built in 1959 by Star Shipyard (Mercer's) Ltd of New Westminster, B.C. (Hull 334), for the Arctic Biological Station (Fisheries Research Board of Canada). It was transported to Tuktoyaktuk by the Arctic Sea Lift and was involved in marine research between Hershel Island and Cambridge Bay from 1959 to approximately 1975. Here seen in Cape Parry in 1964, it was reported in October 2018 hauled out in a yard in Yellowknife.²

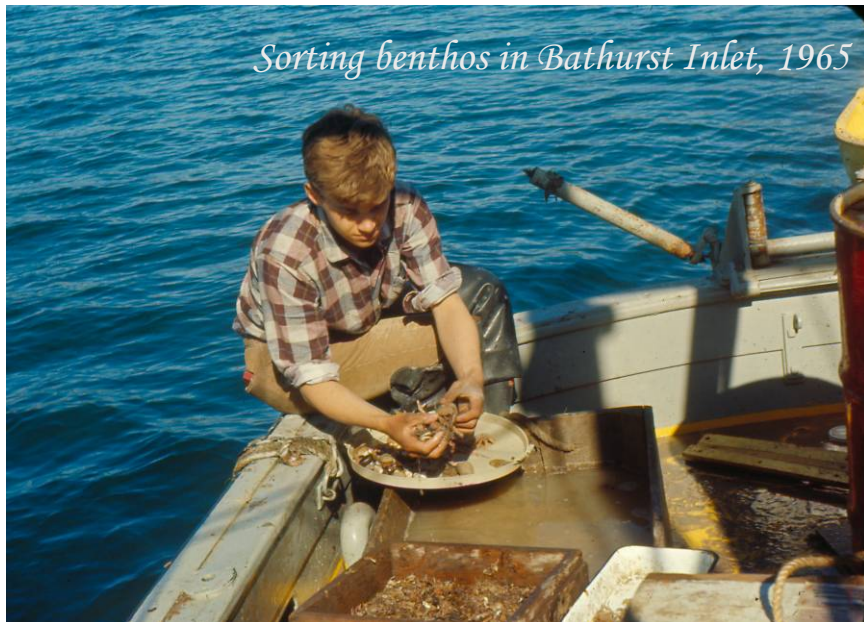
Between 1964 and 1968, when I joined the vessel, the M.V. Salvelinus program was headed by Dr. Gerry Hunter and aimed to study the marine fauna and oceanography of the Western Arctic. Some occasional freshwater work was also done.



Jigging fish in Cape Parry, 1964



Lifting gill nets in Bathurst Inlet, 1965



Sorting benthos in Bathurst Inlet, 1965



Field Station in Starvation Cove, 1967



Oceanography was carried, on occasions from the ice before breakup, and mostly from ship afterwards. Navigation season generally lasted from early July to early September.



Left: M.V. Salvelinus crew of 1964 in Cape Parry : skipper Ingram Gidney and summer students Jean Boulva (top) and David Patriquin (below).

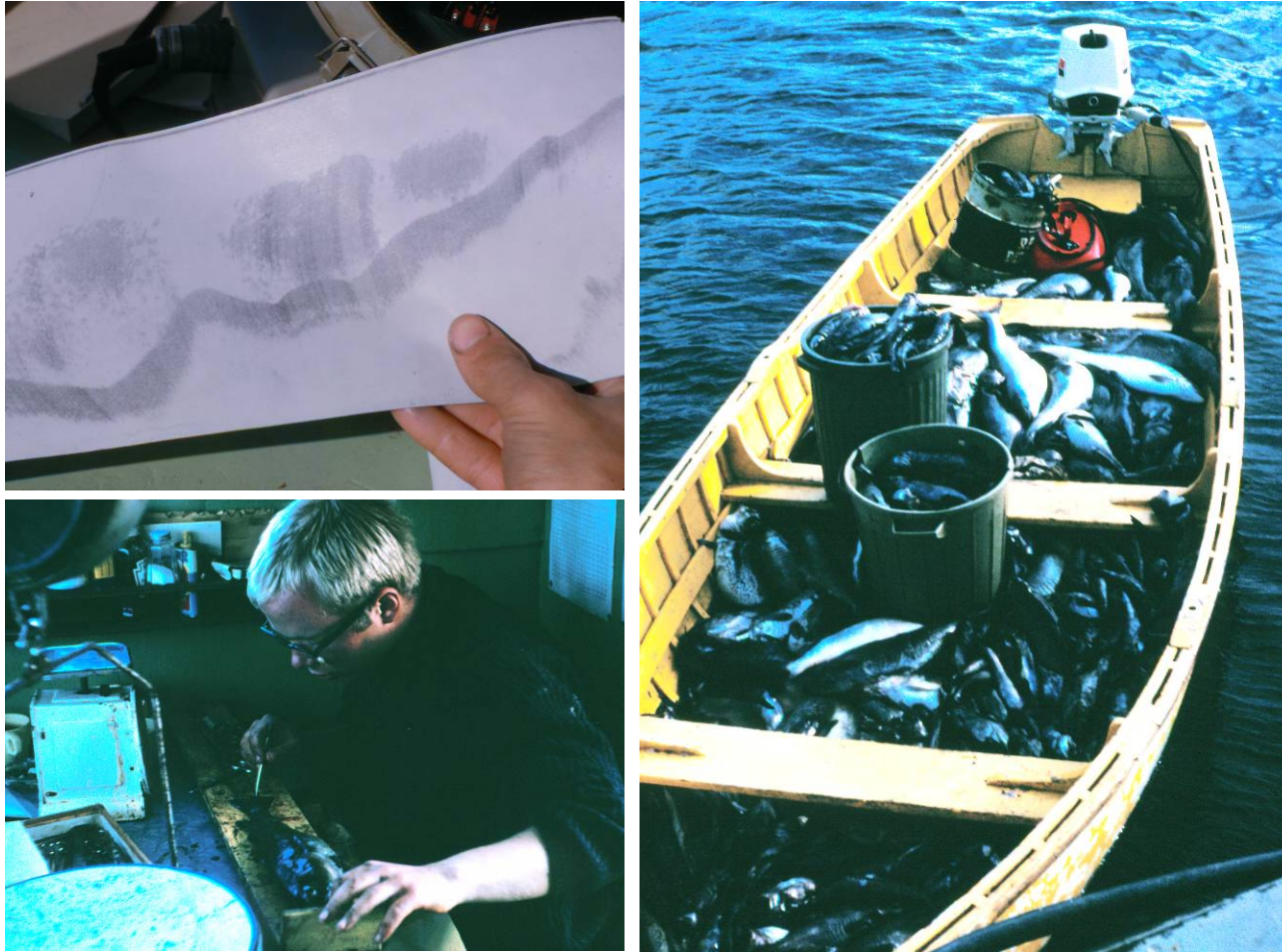


Right top: skipper I. Gidney with program head Dr. Gerry Hunter in 1965.

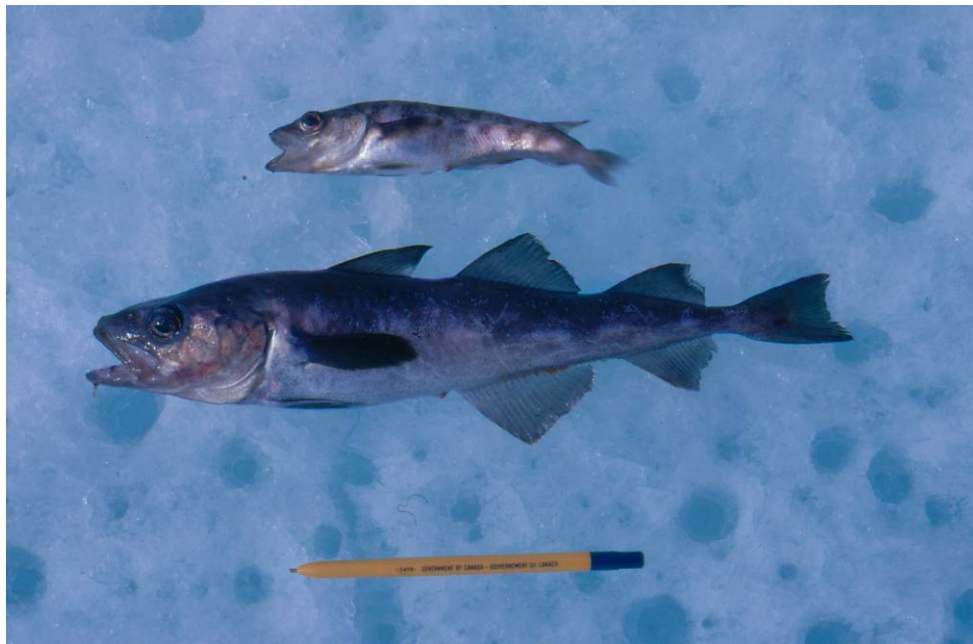
Right bottom: field camp at Keyhole Lake near Cambridge Bay, in 1965, to study landlocked Arctic Char.



Arctogadus in Cambridge Bay



Arctogadus glacialis and *borisovi* (now considered a single species) were found in Cambridge Bay in 1964. They showed up as abundant on the vessel's sonar and were captured by means of gill nets and hook and line. *Gadus ogac* and *Salvelinus alpinus* were also frequent in the catch. All captured fish were processed on board for data. (the two photos to the left not with NWT Archives, © Jean Boulva)




Upper left: young *Arctogadus borisovi* caught under the ice in Cambridge Bay on June 25 1967.

Lower left: tagging of *Gadus ogac* in 1965 in Cambridge Bay. *Arctogadus* could not be tagged, not surviving the pressure change.

Lower right: M.V. Salvelinus ready for winter in Cambridge Bay, 22 September 1967.

For details about *Arctogadus* in Cambridge Bay, see: Boulva, J. 1972. Morphometrics of three sympatric arctic codfishes of the genera *Arctogadus* and *Gadus*. J. Fish. Res. Bd. Canada 29 : 243-249



A photograph of the M.V. Salvelinus, a white and black research vessel, navigating through a field of broken sea ice. The ship has a Canadian flag at the stern and the name 'SALVELINUS' on its side. A dark, forested hill is in the background under a clear sky.

*For general information about the
M.V. Salvelinus program between 1964
and 1968, you may contact:*

*Dr. Jean Boulva
11775, rue de Guise
Québec, Qc
Canada G2A 3K6*